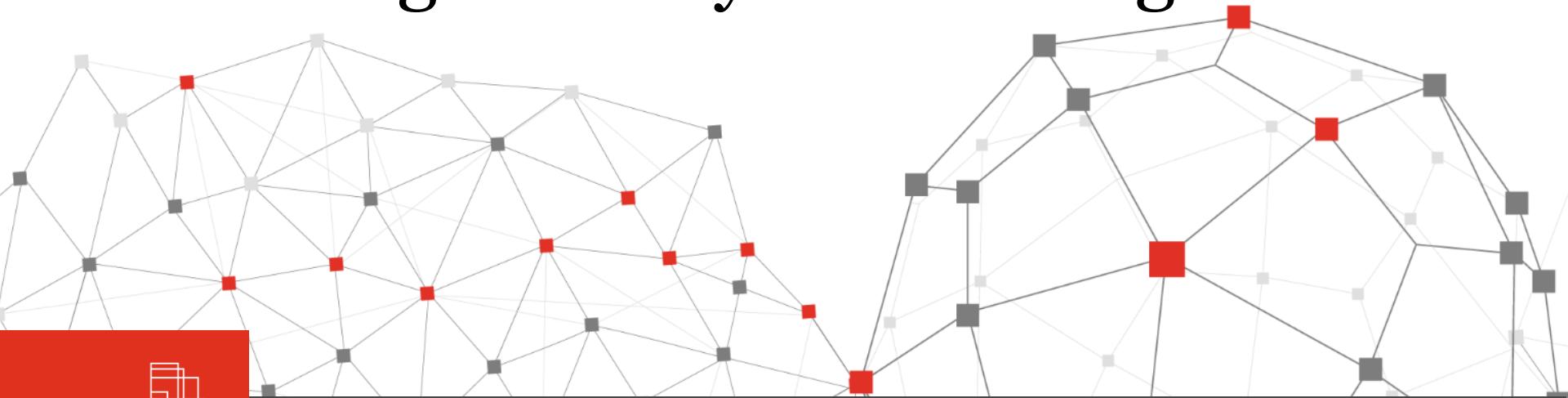


COVID-19

Workforce Deepdive: Embracing new ways of working



April 2020

Topics we will cover today

Introduction:

Jose Marques: Partner, People & Organisation

- **Q&A with our special guest:**

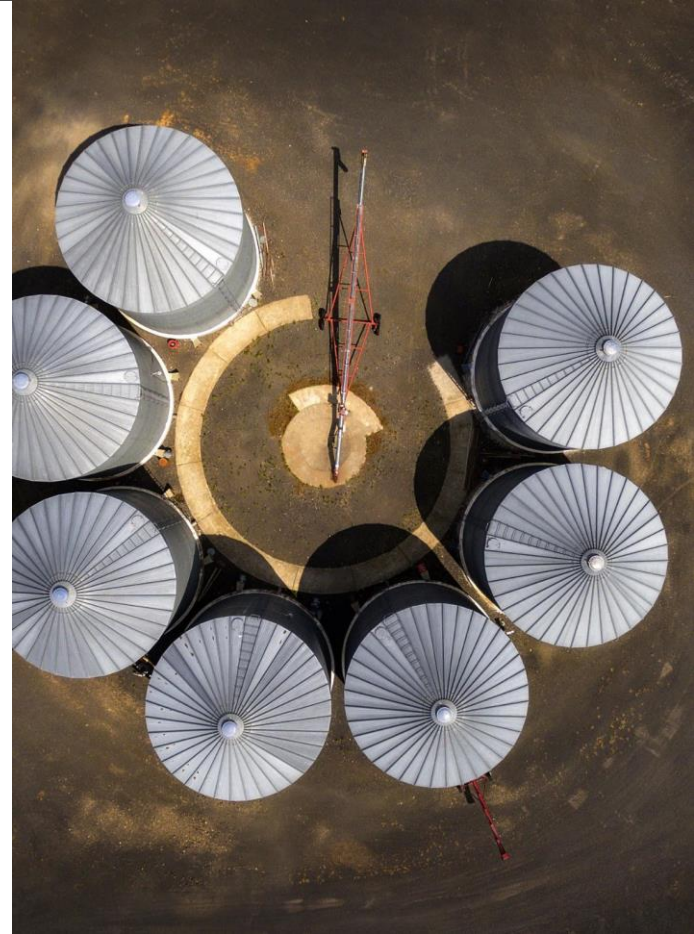
Michaela Christian Gartmann, PwC Switzerland Human Capital leader

- **Beekeeper –**

Workplace communication to connect everyone: Presentation and demo.

Manuel Capel, PwC Digital Services

Quick survey and conclusion



Introduction

José Marques, Partner People and Organisation

危机 Wei ji = crisis in Chinese
危 Wei is danger, 机 ji is opportunity

COVID19 is driving unprecedented disruption, raising numerous complex (and exciting) questions for organisations - the Future of Work is happening now.

Current COVID19 climate is presenting new challenges to organisations every day and our ways of working are rapidly evolving.

What is next on our agenda?



Q&A: Time with our PwC Switzerland Human Capital Leader

Michaela Christian Gartmann



Instructions

In this Q&A, **you** as the audience can get involved, so please submit your questions for Michaela via the **questions box** on your **left hand side**

How to keep everyone informed during the COVID-19 crisis?

Even the ones without a desktop access

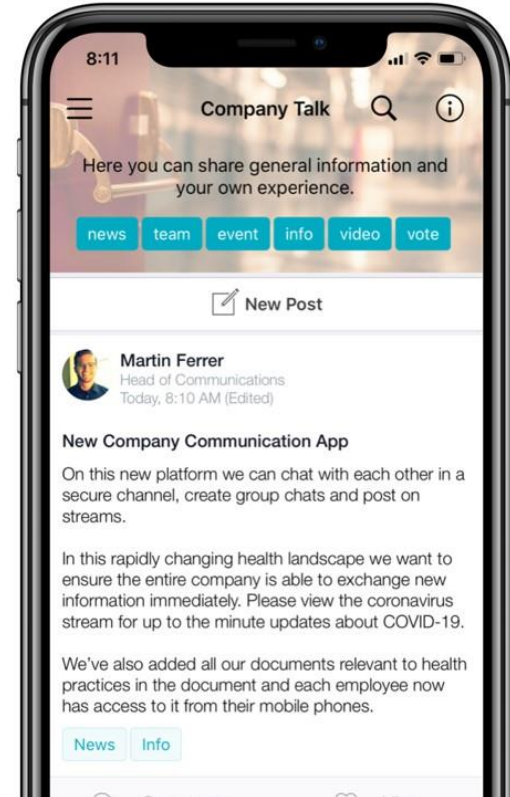
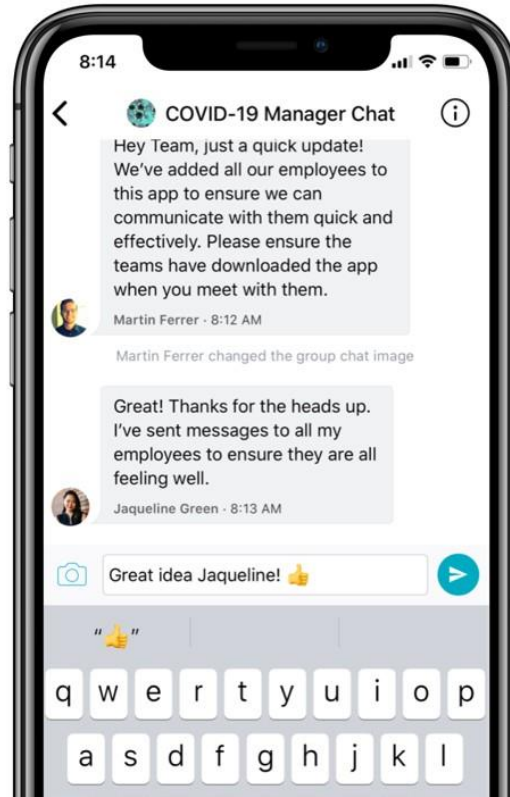
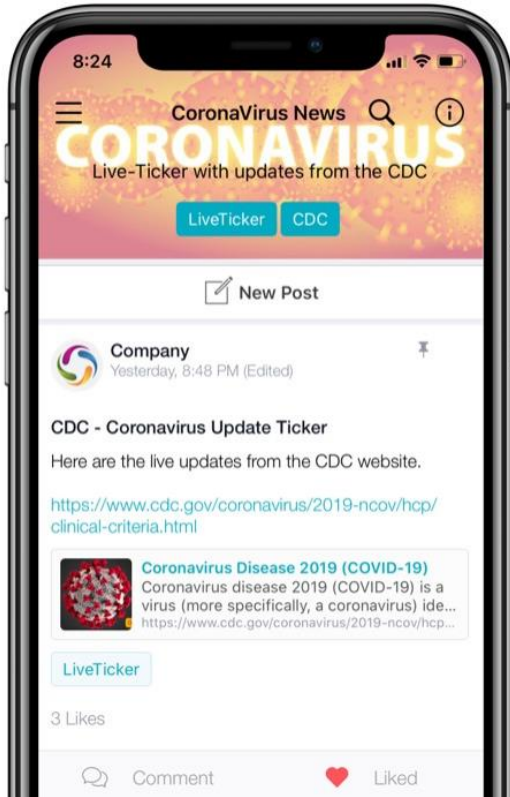


The ones in the front lines,

the ones on deck

... or doing the night shift.

Beekeeper offers a simple, fast and secure solution



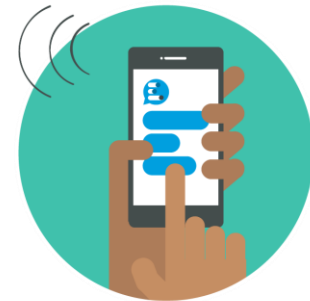
Survey: Polling question

Which topic would you like to deep dive into in our next Workforce webinar?

1. **Immigration, global mobility** and business travel issues
2. **Employment** obligations, costs and benefits
3. **Wellbeing**: physical and mental health
4. **Legal advice** on employment
5. **Contingency planning / Critical roles**
6. **Diversity and inclusion** considerations
7. Organisational **culture**
8. **Talent attraction** and retention
9. **Organisational structure / New ways of working** / Working remotely
10. **Leadership behavior / Upskilling**

Instructions

On your screen you will see a **box pop-up**, you can select one or multiple topics that you would be interested in and click **Submit**



Thank you!

One Point of Contact:

Via [our crisis helpline](#) and PwC Switzerland website ([EN](#) | [DE](#) | [FR](#))

Your experts:



José Marques
People & Organisation
[Email](#)



Lisa Daniells
People & Organisation
[Email](#)



Matthias Leybold
PwC Digital Services
[Email](#)



Manuel Capel
PwC Digital Services
[Email](#)



Appendix

Beekeeper – Connect everyone without a desktop access

How do you communicate with your non-desktop employees during the the COVID-19 crisis?

Beekeeper offers a simple, fast and secure solution

- **Important features available in your pocket**
 - Communicate with your employees using a mobile app accessible to all
 - Broadcast important information to **everyone** in real time
 - Send secure individual or group messages
 - No need to exchange personal information such as personal email address or phone numbers
- **What beekeeper brings you**
 - simple, fast and secure communication
 - ability to reach everyone, even those who do not have access to a company computer or email
 - rapid implementation of the application in just a few days



[Find out more and register for more information](#)